

THE EXCHANGER

Volume XXXI, Issue 2

June 2018



CHAPTER MEETING: June 22nd, 2018

Presentation:

CHIMNEY AND GAS VENT DESIGN 101

Industrial Arts Brewing, Garnersville, NY



PRESIDENT'S MESSAGE

The 2017-2018 ASHRAE Bi-State year is rounding out with a feeling of excitement and accomplishment. We've had five great dinner meetings offering 9 PDH credits covering topics including energy recovery, hydronic testing and balancing, energy efficient air movement, chiller performance testing, PV solar systems, NYPA history, and Steam system design. We hosted an ASHRAE technical committee member who gave a presentation on mission critical facilities, data centers, technology spaces, and electronic equipment. We also had an afternoon full of seminars and tours hosted at the Mechanical Heating Supply, Inc. training facility in the Bronx with presentations on condensing boiler performance optimization and ASHRAE's Indoor Air Quality guidelines.

The highlights of 2018 have been plentiful. We received an amazing presentation by ASHRAE Distinguished Lecturer Dr. Andrey Livchak on Kitchen Ventilation and Hood Design. We had an eye-opening presentation by Sylvia Louie from NYPA on the Power Authorities origins, long history, and current responsibilities. In February, Refrigeration Chair, Paul Chipoco, P.E., organized a tour of One Bryant Park, the new Bank of America building, with a magnificent cogen plant and a truly remarkably clean boiler room. The tour was followed by a YEA social at Hofbrau Bierhaus organized by YEA Chair Joe Russo. Joe also serves as the Golf Outing Chair and put on a hugely successful outing at The Links at Unionvale in May. This year's outing broke record attendance numbers and raised more funds for student scholarship and research promotion than ever before. Joe also seems to have an in with someone important, as the weather was spot on again this year. Joe's volunteered to serve as Golf Outing Chair again next year, so expect to see a fantastic encore.

GGAC Chair Jim Dolan, P.E. helped to organize a long anticipated Day on the Hill at the New York State Capitol, which you can read a bit more about on page 5 of this exchanger. Our Student Activities have been growing. Our chapter sponsored the BOCES Putnam Northern Westchester F1 in Design program with a \$1520 donation for a wind visualization tunnel for aerodynamic testing. We were also proud to grant \$7,500 in student scholarships to 9 promising young engineering students.

All of this is made possible by the dedication of our Board of Governors, Officers, and Committee Chairs as well as our Membership for continued support and interest in ASHRAE and the work that we do. I would also like to encourage anyone who has any interest in getting involved in the operation of the chapter to reach out to me or any other Board member or Committee Chair. We could always use the help, and the more membership participation, the better the chapter gets!

We will finish our year with a brewery tour at Industrial Arts Brewing in Garnersville, NY, and a presentation on Chimney and Gas Vent Design. Catering will be by our very own Joe Russo's family pizzeria, Avanti Restaurant & Pizzeria. Next year is bound to be a fantastic year as well, as we welcome our new Chapter President, Stephanie O'Dea!

Brendan Smith, P.E.

UPCOMING EVENTS

JUNE 22ND: CHAPTER MEETING, CHIMNEY DESIGN AND BREWERY TOUR

AUGUST 16TH-18TH: REGION 1 CHAPTER REGIONAL CONFERENCE—JERSEY CITY

IN THIS ISSUE

- Upcoming Events
- In Case You Missed It
- Student Scholarships
- GGAC Day on the Hill
- ASHRAE Region 1 CRC
- ASHRAE Research

UPCOMING MEETINGS

Month	Date	Tech Session	Main Presentation	PDH	Promotion
June	6/22/18	Chimney Design 101	Industrial Arts Brewery Tour	1.5	Membership Pro
August	8/16/18-8/18/18	Chapter Regional Conference	Host: New Jersey Chapter	TBD	

YEA EVENTS

Month	Tentative Date	Event
November	11/15/17	Bronx Brewery Social
February	2/15/18	Hofbrau Bierhaus Social
June	6/14/18	LI/NY/Bi-State Joint YEA Event

CHAPTER PAOE POINTS

Chapter Number	Chapter Name	Chapter Members	Member Promotion	Student Activity	Research	History	Chapter Operation	CTTC	GGAC
146	Bi-State	214	785/	720/	470/	350/	2580/	950/	2000/



1.5 PDH

Save the Date

Chapter Meeting
June 22, 2018



Location: Industrial Arts Brewing Company
55 W Railroad Ave. #25
Garnerville, NY 10923

4:30 – 5:00 PM Arrival and Networking

5:00 – 6:00 PM Tasting and Tour

6:00 – 7:00 PM Buffet Dinner and Main Presentation

1.5 PDH

RSVP Required

\$25 Members, \$30 Non-Members
Complimentary Admission for Engineering Students
Walk-ins and General Public Welcomed

Chimney and Gas Vent Design 101

The course is designed to teach participants about the fundamentals of chimney and gas vent design. We will discuss the definitions, venting strategies, and flue materials for Cat I, II, III, and IV appliances. We will also discuss the ASHRAE chimney design equation, efficiency, reliability, theoretical draft, mechanical draft, and draft control through barometric dampers and modulating controls. The presentation will wrap up with an important discussion on flue safety, good venting practices, and the common code violations and how to recognize and avoid them.

John Kim is an application engineer with Chimney Design Solutions Inc. since 2011. Specializing in the field of Chimney and Gas vent Design; Boiler Room Combustion Air Design; Laundry Room Exhaust System Design; Multi-story Bathroom, Kitchen Hood, and Clothes Dryer Exhaust Design. Currently he is on the technical panel for UL378, standard for draft equipment, and ASHRAE TC06.10, fuels and combustions.

Industrial Arts Brewing Company Tasting and Tour

Industrial Arts is one of the Lower Hudson Valley's newest breweries. Opened in 2016 by the former head brewer of both Ithaca Beer Company and Peekskill Brewery, and a generally regarded master of his trade, Jeff O'Neil, Industrial Arts is becoming well known as one of the best in the area. The brewery occupies a 30,000 square foot pre-Civil War industrial complex, and is filled with state of the art brewing equipment. O'Neil's process focused brewing technique puts forward a range of beers from Metric (a pilsner), to Summer Landscape (a pale lager), to Torque Wrench (a double IPA) such that anyone can find something they'll love.

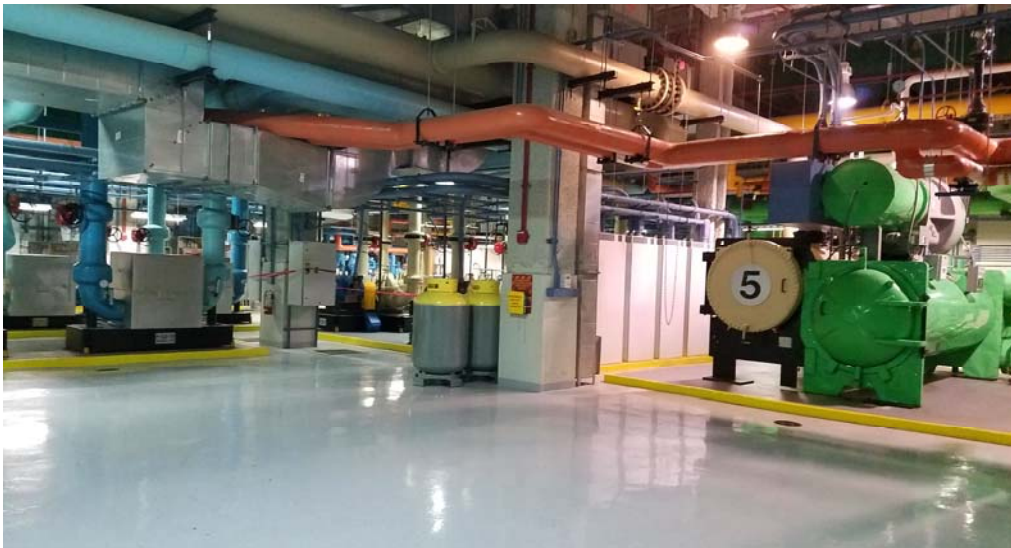
Catering by Avanti Pizzeria

Coming Months: August 16-18 – ASHRAE Region 1 CRC – Jersey City, NJ

See www.ashraebistate.org for more information or call Brendan Smith @ 646-243-3042
RSVP to Brendan.corey.smith@gmail.com

IN CASE

you missed it



On February 15, 2018, we had Ed Bricker of The Durst Organization along with the Chief Engineer met us at One Bryant Park, Manhattan to give us a tour of the Chiller, Ice, and Cogen Plant at this amazing facility. Most of the time we organize tours for our Chapter, we have only one of these, but not today. We have won the jackpot of touring all three, and not only that, but getting to know a LEED Platinum Certified building as well. We met in the lobby, and then went down one of the biggest freight elevators I've been in. It literally fit almost all of our crew. Ed and

company guided us to the Chiller Mechanical Room towards the huge real time informational screen made up of (8) 60" widescreen TV's. There we saw the immense magnitude of how all of these systems work in unison to generate power, heat, and cool the building on a daily basis, 24 hours a day, 7 days a week.

-Paul Chipoco, P.E.,
Refrigeration Chair



STUDENT SCHOLARSHIP AWARDEES

John Gissona—Pennsylvania College of Technology Class of '19

Gabriella Borea—Fairfield University Class of '19

Daniella DiZenzo—Quinnipiac University Class of '20

Nicholas Guttilla—Manhattan College Class of '19

Jack Arellano—Fordham Preparatory School Class of '18

Daniel LaVigna—Manhattan College Class of '19

Sabrina Mittelstadt—Franklin & Marshall College Class of '20

Nicholas Centone—UMass Amherst Class of '19

Bryan Reihna—St. Francis Preparatory School Class of '18

GGAC—DAY ON THE HILL

Grassroots Government Advocacy Committee Chair Jim Dolan, P.E., helped to coordinate, and bring to fruition, a Day on the Hill at New York State's Capitol that had been in the works for years. Jim, accompanied by Chapter President Brendan Smith, P.E., met with lawmakers staff and other GGAC committees from across the New York chapters at the Capitol and Legislature buildings in Albany. The GGAC Committee introduced themselves and ASHRAE to the staffers, and offered ASHRAE as a resource to interpret and lend expert advice on building energy use, HVAC codes, and public health issues such as Legionella outbreaks. While on the capitol, the committee also encountered an animal rights activist summit and Jim met an owl. The day finished with a round table discussion with NYSERDA personnel about the latest NYSERDA initiatives and ASHRAE involvement. Jim has volunteered to serve as GGAC Chair again in the coming year, so we can expect to see more progress on this new committee.



RESEARCH PROMOTION

We are always looking to increase our Research Promotion donations and we encourage our membership to do the same. Research Promotion is the backbone of ASHRAE; without it we would not have all of the useful information we rely on as HVAC&R industry professionals. As we approach the end of the year and enter the holiday season, it's a great time embrace the spirit of giving and donate. After all, it is tax deductible.

If you are interested in donating, please contact our Research Promotion Chair, Kieran Moran at Kieran.j.moran@jci.com or (914) 588-2141, or simply visit the ASHRAE website at www.ashrae.org.

EDITOR'S NOTE

The appearance of any technical data, editorial material, or advertisement in this set of publications does not constitute endorsement, warranty or guaranty by ASHRAE of any product, service, procedure, design, or the like. ASHRAE does not warrant that information is free from errors, and ASHRAE does not necessarily agree with any statement or opinion in this set of publications. The entire risk of the use of any information in this set of publications is assumed by the user. Statements made in this publication are not expressions of the Society or of the Chapter and may not be reproduced without special permission.

ABOUT ASHRAE

ASHRAE, founded in 1894, is a building technology society with more than 50,000 members worldwide. The Society and its members focus on building systems, energy efficiency, indoor air quality and sustainability within the industry. Through research, standards writing, publishing and continuing education, ASHRAE shapes tomorrow's built environment today. ASHRAE will be the global leader, the foremost source of technical and educational information, and the primary provider of opportunity for professional growth in the arts and sciences of heating, ventilating, air conditioning and refrigerating.

BI-STATE CHAPTER OFFICERS AND GOVERNORS 2017—2018

Position	First Name	Last Name	Email	Phone
Officers				
President	Brendan	Smith	bsmith@lynstaar.com	(914) 741-1290 ext 17
President-Elect	Stephanie	O’Dea	slodea229@gmail.com	(646) 765-6549
Vice President	Stephanie	O’Dea	slodea229@gmail.com	(646) 765-6549
Secretary	Paul	Chipoco	paul.chipoco@nypa.gov	(914) 287-3426
Treasurer	John	Fusco	jfusco@kohlerronan.com	(203) 778-1017
Governors				
BOG (term ends June 2020)	John	Fusco	jfusco@kohlerronan.com	(203) 778-1017
BOG (term ends June 2020)	Cliff	Konitz	c.konitz@verizon.net	(845) 297-5864
BOG (term ends June 2020)	Stephanie	O’Dea	Stephanie.L.Odea@jci.com	(914) 593-5245
BOG (term ends June 2019)	James	Dolan	jdolan@olace.com	(914) 919 3106
BOG (term ends June 2019)	Dennis	LaVopa	dlavopa@dIFlowTech.com	(845) 265-2828
BOG (term ends June 2018)	Brendan	Smith	bsmith@lynstaar.com	(914) 741-1290 ext 17
BOG (term ends June 2018)	Larry	Sturgis	tqualarrysturgis@gmail.com	(914) 592-1776
Chapter Delegate	Brendan	Smith	bsmith@lynstaar.com	(914) 741-1290 ext 17
Chapter Alternate	Kieran	Moran	kieran.j.moran@jci.com	(914) 588-2142
Committee Chairs				
CTTC	Stephanie	O’Dea	slodea229@gmail.com	(646) 765-6549
Government Affairs	James (Jim)	Dolan	jdolan@olace.com	(914) 919 3106
Research Promotion	Kieran	Moran	kieran.j.moran@jci.com	(914) 588-2142
Student Activities	Kieran	Moran	kieran.j.moran@jci.com	(914) 588-2142
Young Engineers in ASHRAE	Joseph	Russo	jrusso@kohlerronan.com	(845) 558-5189
Membership Promotion	Kerry	Gorczyński	kgorczyński@olace.com	(914) 747-2800
Refrigeration	Paul	Chipoco	paul.chipoco@nypa.gov	(914) 287-3426
Webmaster	Cliff	Konitz	c.konitz@verizon.net	(845) 297-5864
Newsletter Editor	Brendan	Smith	bsmith@lynstaar.com	(914) 741-1290 ext 17
Historian	John	Fusco	jfusco@kohlerronan.com	(203) 778-1017
Reception	Brendan	Smith	bsmith@lynstaar.com	(914) 741-1290 ext 17
Administrator	Cliff	Konitz	c.konitz@verizon.net	(845) 297-5864
Golf	Joseph	Russo	jrusso@kohlerronan.com	(845) 558-5189

WHY BE INVOLVED IN A LOCAL CHAPTER?

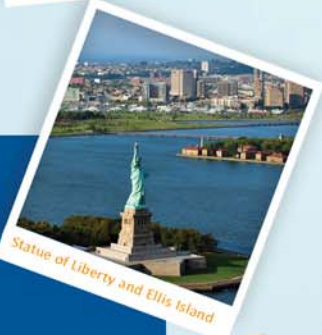
- Learn about the latest technologies presented in the program sessions
- Attain continuing education credits
- Meet industry associates and discuss local concerns
- Network amongst designers, installers, vendors, educators, in your local area to help improve business for all

2018 REGION I CHAPTER REGIONAL CONFERENCE
AUGUST 16-18 JERSEY CITY, NJ

Family and Companion Tours

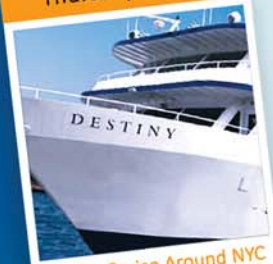


Liberty Science Center



Statue of Liberty and Ellis Island

Thursday Night



Dinner Cruise Around NYC

YEA Event



Rooftop at Exchange

Presidential Dinner



Manhattan Ballroom

Sponsorship Levels:

Platinum
\$5,000

Gold
\$2,500

Silver
\$1,000

Bronze
\$500

WHAT IS THE CRC?

The Chapters Regional Conference (CRC) is intended to provide a forum for the dissemination of information pertaining to chapter, regional and society activities. Region I consists of Connecticut, Maine, New Hampshire, New Jersey, New York, Rhode Island & Vermont. Chapters from these areas come together to report their activities from the past year and establish goals for the coming year. Technical sessions are conducted as well as award presentations and social activities. This is an annual conference and is located in the city of one of its region's chapters and we are proud Jersey City is this year's chosen city for Region I.

Typically 100-150 Region I ASHRAE Members along with spouses and families attend the CRC. Please go to <http://ashraeregion1.org> for a detailed listing of the benefits of being a sponsor.

Conference Registration Fees

Registration Type	By July 1, 2018	After July 1, 2018
Full Conference	\$375	\$450
Companion Full Conference	\$230	\$275
Kids Full Conference	FREE	FREE
Family Tour (Liberty Science Center)	\$35	\$35
Companion Tour (Statue of Liberty and Ellis Island)	\$35	\$35
YEA Event (Rooftop At Exchange Place)	FREE	FREE
Friday/Saturday Conference	\$225	\$275
Friday/Saturday Companion	\$135	\$165
Saturday Only	\$125	\$150
Thursday Dinner Only (Cruise)	\$110	\$125

HOTEL INFO:

Hyatt Regency Room Rate: \$259 + taxes & fees
2 Exchange Place Jersey City, NJ

Conference Registration is on the Region I Website
(<http://ashraeregion1.org>)

Hotel Reservations can be booked thru a direct link
(<http://book.passkey.com/e/49095400>)

Note: Hotel reservation is separate from conference registration.

